

Enterprise Suite of Supply Chain Performance Software

Driving Supply Chain Innovation



Supply Chain Performance Software

Benefits:

- View real-time, 24 x 7 visibility of order & shipment status
- Gain self-help capabilities for customers & suppliers
- Enable proactive responses to potential customer service issues
- View real-time location of goods if using RTLS or GPS system
- Receive alerts based on user-defined business rules
- Create one point of secured and personalized access to all logistic information
- Put mission critical information at the user's fingertips, allowing them to make better informed decisions
- Web-enable your legacy information
- Exchange information with all partners via EDI or Internet
- Leverage E-Business technology for competitive advantage

AGI's Enterprise Suite of Supply Chain Performance applications delivers the long sought after reality of an integrated and collaborative supply chain without the large scale effort, multi-year timeframe, and massive investments that have traditionally made these capabilities accessible for only a few. The innovative architecture and technology platform combined with the broad and extensive expertise of AGI enables customers to rapidly implement a true integrated supply chain solution utilizing their existing systems and the systems of their partners, suppliers, and vendors. Additionally, the virtually unlimited flexibility of the product set eliminates the need to spend years determining the screens, views, data elements, queries, or other attributes for all potential users or customers, and allows each user and customer of the solution set to determine and customize the environment to best suit their needs.

The modular design of the suite allows customers to phase in capabilities over time based on need and return on investment. This design offers our customers the ability to achieve rapid payback and scale to future needs of their clients.

Best of all, if you are a 3PL or other logistics provider, you have the ability to brand the solution set as your own customized product offering in order to distinguish yourself in your industry. And, if you have the internal IT talent, there are additional source code options that allow you to build on our already formative set of capabilities.

The Suite consists of:

Integration Framework—Providing an innovation dynamic integration link and modular data collection engines to either connect to or capture necessary data throughout the various systems and solutions in your supply chain.

Visibility—Providing a corporate, departmental, or highly personal view of all captured supply chain assets through a completely web-enabled, real-time performance driven environment.

Event—Providing both notification and transactional automation of collaborative supply chain events that are configurable to your specific needs.

Performance Management—Providing the ability to configure service levels and KPI's throughout your supply chain and proactively manage your performance.

Analytics—Providing the ability to trend and analyze supply chain performance indicators or a longer period allowing you to make value centric decisions based on real information.

AGI Worldwide
3625 Brookside Parkway
Suite 525
Alpharetta, GA 30022
(678) 319-9443
www.agiworldwide.com

Enterprise Suite of Supply Chain Performance Software

Driving Supply Chain Innovation



Benefits:

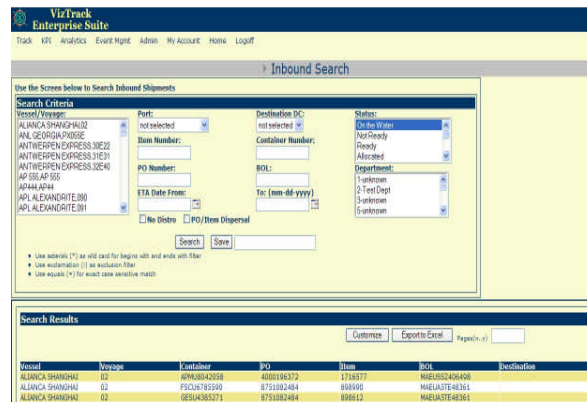
- View real-time, 24 x 7 visibility of order & shipment status
- Gain self-help capabilities for customers & suppliers
- Enable proactive responses to potential customer service issues
- View real-time location of goods if using RTLS or GPS system
- Receive alerts based on user-defined business rules
- Create one point of secured and personalized access to all logistic information
- Put mission critical information at the user's fingertips, allowing them to make better informed decisions
- Web-enable your legacy information
- Exchange information with all partners via EDI or Internet
- Leverage E-Business technology for competitive advantage

AGI Worldwide
3625 Brookside Parkway
Suite 525
Alpharetta, GA 30022
(678) 319-9443
www.agiworldwide.com



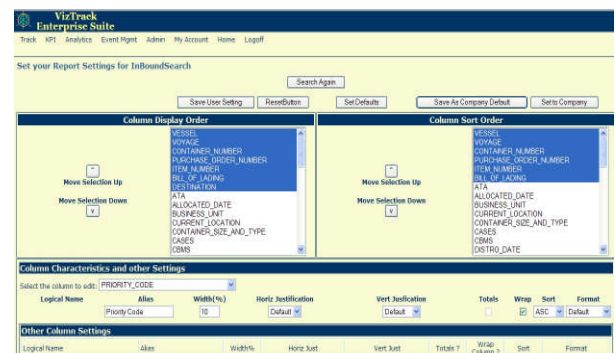
Integration and Visibility

Connecting the wide array of suppliers, vendors, service providers, partners, and customers within a complex supply chain has always been one of the most significant challenges facing total supply chain integration. By providing multiple integration capabilities that range from spreadsheet and e-mail extraction techniques to more sophisticated EDI, XML, or direct integration, AGI enables the collection and collaboration of most of today's supply chain entities. Through the combination of proprietary direct connection and dynamic access applications and modular collection engines AGI enables the relational ability to view and work with enterprise supply chain components through a single entity.



The view or visibility of supply chain components is where the value of AGI begins. By enabling our customers to work with and manage their multitude of separate and disconnected systems of supply chain data through a concentric view, AGI allows you and your customers to make value rich decisions that may dramatically affect your supply chain performance in time to make a real difference.

But just having visibility is not enough. Experience has taught us that it is nearly impossible to determine which data elements that every user of a single source of supply chain data would need. For these reasons AGI was designed to allow individual companies, departments, and users to customize and build their own views based on their specific needs with just a few clicks of a mouse; no coding, no additional report building, no new screen development. Each user can build their views, screens, and environment to best suit their needs.



**Enterprise Suite of
Supply Chain
Performance Software**

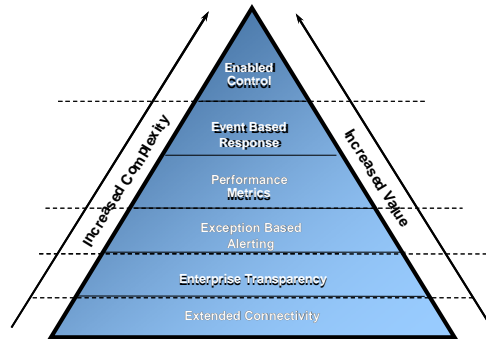
Driving Supply Chain Innovation



Event and Transaction Management

Benefits:

- View real-time, 24 x 7 visibility of order & shipment status
- Gain self-help capabilities for customers & suppliers
- Enable proactive responses to potential customer service issues
- View real-time location of goods if using RTLS or GPS system
- Receive alerts based on user-defined business rules
- Create one point of secured and personalized access to all logistic information
- Put mission critical information at the user's fingertips, allowing them to make better informed decisions
- Web-enable your legacy information
- Exchange information with all partners via EDI or Internet
- Leverage E-Business technology for competitive advantage



Visibility is only the beginning of the supply chain value and performance gain that you can achieve. The ability to manage proactively critical decisions in your supply chain provides exponential opportunity for performance and efficiency gains.

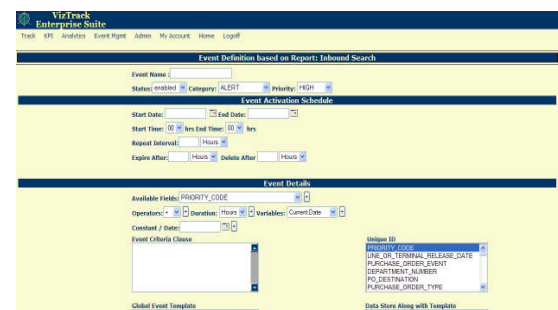
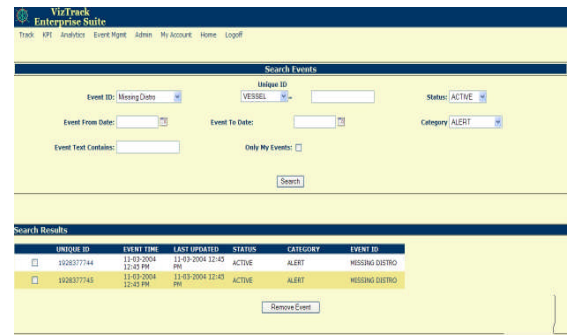
The more a customer is able to proactively make critical decisions within their supply chain and then automate the resulting activity, the more they are able to accelerate their investment return.

In addition, the incremental implementation approach allows you to gain immediate value from your most critical event conditions and then build on these capabilities over time.

The two primary components of Event include:

Event Notification—Highly configurable framework allowing users to create event notification from a virtually unlimited set of comparisons and utilizing any integrated supply chain data field. Notifications can be configured to be sent via email, text message, or customizable data types.

Event Transaction—Providing a sophisticated automation ability, Event Transactions can be configured to automatically execute pre-defined transactions within many integrated systems throughout your supply chain. Examples would be to automatically tender a load to your shipping provider when a trailer is 90% loaded in the warehouse.



AGI Worldwide
3625 Brookside Parkway
Suite 525
Alpharetta, GA 30022
(678) 319-9443
www.agiworldwide.com

**Enterprise Suite of
Supply Chain
Performance Software**

Driving Supply Chain Innovation



Performance Management and Analytics

Benefits:

- View real-time, 24 x 7 visibility of order & shipment status
- Gain self-help capabilities for customers & suppliers
- Enable proactive responses to potential customer service issues
- View real-time location of goods if using RTLS or GPS system
- Receive alerts based on user-defined business rules
- Create one point of secured and personalized access to all logistic information
- Put mission critical information at the user's fingertips, allowing them to make better informed decisions
- Web-enable your legacy information
- Exchange information with all partners via EDI or Internet
- Leverage E-Business technology for competitive advantage

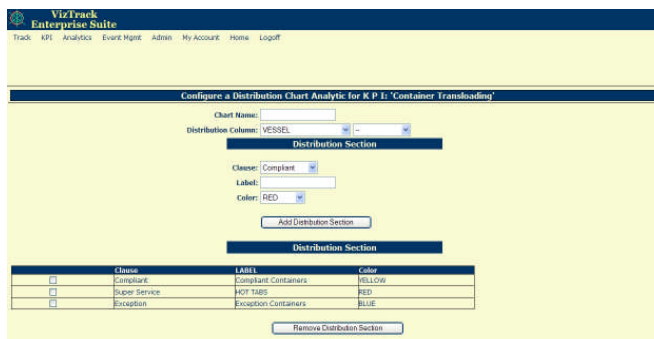
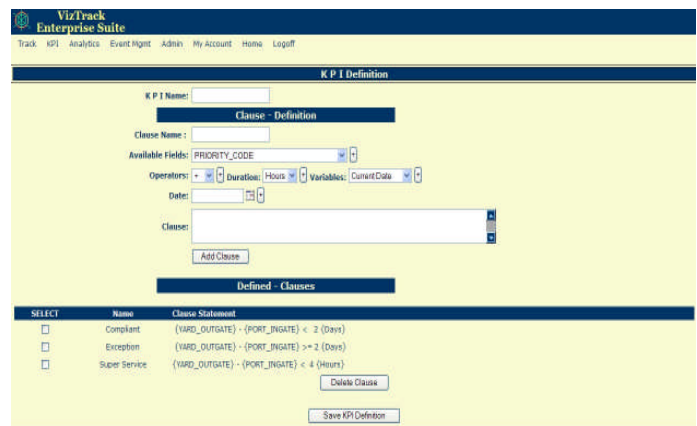
The bottom line in developing an effective and efficient supply chain is performance results combined with the ability to measure and track these results without having to spend days or weeks and many man hours collecting statistics.

Additionally, if you are providing supply chain services to your customers, then you likely have very specific and detailed performance metrics that you are expected to deliver and you probably have to report against these metrics regularly.

For these reasons and more, Performance Management was developed to assist in reducing the amount of effort required to track and report on performance measures, and more importantly, allow you and your customers to accurately measure performance criteria across the disparate systems and partners in your supply chain.

With Performance Management you have access to vital statistics occurring in your supply chain in real time, twenty-four hours per day.

Following the architecture of AGI's other products, Performance Management is highly configurable and leverages all integrated supply chain data elements.



By incorporating the AGI Analytics module into the framework, you are provided with a powerful analysis tool to assist you in discovering important trends in your supply chain over long periods, providing you with the information to make accurate management decisions.

AGI Worldwide
3625 Brookside Parkway
Suite 525
Alpharetta, GA 30022
(678) 319-9443
www.agiworldwide.com

**Enterprise Suite of
Supply Chain
Performance Software**

Driving Supply Chain Innovation



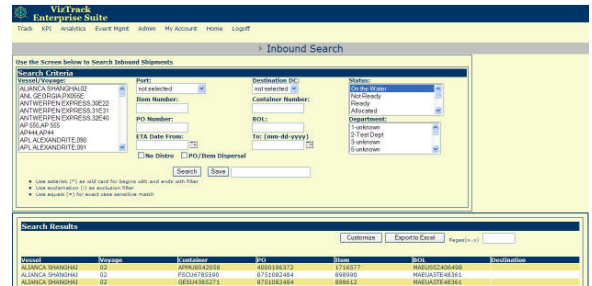
Advanced Technology

AGI's highly integrated, Java-based technology platform provides significant flexibility, scalability, extensibility, security, and performance for tracking and managing supply chain assets throughout the logistics lifecycle in real-time. The advanced user interface offers company, group, and user-level security through a web browser, and provides complex customization features, such as custom views and personal alerts, in order to offer the most effective supply chain management tool set.

Benefits:

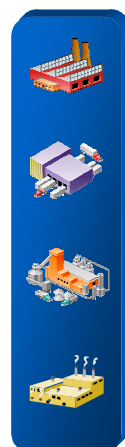
- View real-time, 24 x 7 visibility of order & shipment status
- Gain self-help capabilities for customers & suppliers
- Enable proactive responses to potential customer service issues
- View real-time location of goods if using RTLS or GPS system
- Receive alerts based on user-defined business rules
- Create one point of secured and personalized access to all logistic information
- Put mission critical information at the user's fingertips, allowing them to make better informed decisions
- Web-enable your legacy information
- Exchange information with all partners via EDI or Internet
- Leverage E-Business technology for competitive advantage

The standards-based, open architecture is based on J2EE technologies, XML schemas, and platform neutral scripting languages. Strict adherence to open standards such as these allows a wide variety of deployment options across multiple hardware and application platforms.

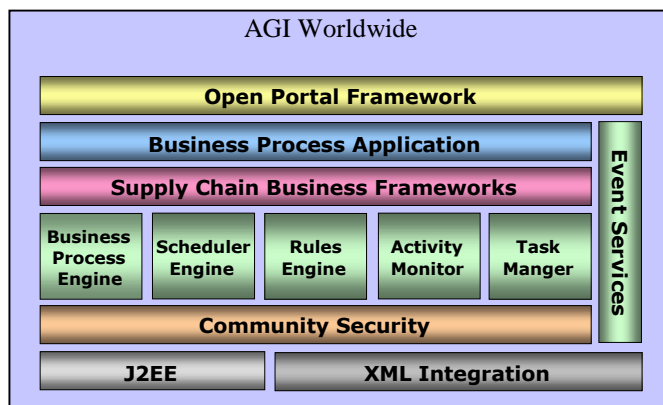
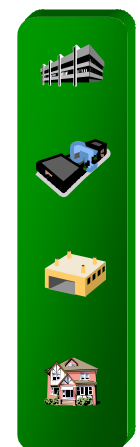


Organizations have made tremendous investments in deploying packaged applications such as ERP, WMS, and SCM systems, as well as building custom applications with a variety of platforms and development tools, including CORBA, J2EE, and .NET. AGI provides robust data integration capabilities that overcome the difficulties inherent in pulling together diverse data formats from internal and partner systems using various communication technologies. To be fully effective, end-to-end business processes must leverage such existing systems and treat them as first-class process participants. AGI provides connectivity at the message, transaction, and process level.

Suppliers



Customers



AGI Worldwide
3625 Brookside Parkway
Suite 525
Alpharetta, GA 30022
(678) 319-9443
www.agiworldwide.com

Enterprise Suite of Supply Chain Performance Software

Driving Supply Chain Innovation



Benefits:

- View real-time, 24 x 7 visibility of order & shipment status
- Gain self-help capabilities for customers & suppliers
- Enable proactive responses to potential customer service issues
- View real-time location of goods if using RTLS or GPS system
- Receive alerts based on user-defined business rules
- Create one point of secured and personalized access to all logistic information
- Put mission critical information at the user's fingertips, allowing them to make better informed decisions
- Web-enable your legacy information
- Exchange information with all partners via EDI or Internet
- Leverage E-Business technology for competitive advantage

AGI Worldwide
3625 Brookside Parkway
Suite 525
Alpharetta, GA 30022
(678) 319-9443
www.agiworldwide.com



Architecture Features

• J2EE-based Application

The AGI framework is a J2EE based application utilizing the features of J2EE specification and can be hosted on any J2EE compliant application server like JBOSS, WebLogic, WebSphere, and etc.

• 'Cluster Safe' can be clustered among Multiple J2EE Servers

To improve scalability, the application currently can be used in a clustered environment using load balancers and multiple Web-Servers. Sessions are managed using persistent data, thus performance and volume are only limited by the hardware used.

• High Performance Code

Code is high performance and there are no 'stalls' by design.

• Declarative Reporting Framework

SQL is generated dynamically by the code based on an API which developer needs to call. No SQL to be written by application developers.

• Struts-based Web Framework, Enhanced Struts Tags

Struts tags have been enhanced to accommodate drop downs, select boxes, and etc. They have also been enhanced to be security aware.

• Utilization of standard design patterns such as Session Bean Façade, Data Access Objects, Model View Controller, and etc.

Application utilizes standard patterns such as the ones mentioned above. It also uses reflection API to abstract code from dependencies on particular classes or implementations. For example, the tags can work on any model and do not require the model to implement any interface or package. If the appropriate data methods are present, the framework reflects on the classes to get the right information.

• Subscriptions and Notifications Framework

Application contains a very generic subscriptions and notifications framework, which utilizes J2EE Mail API and JMS to generate and route notifications.

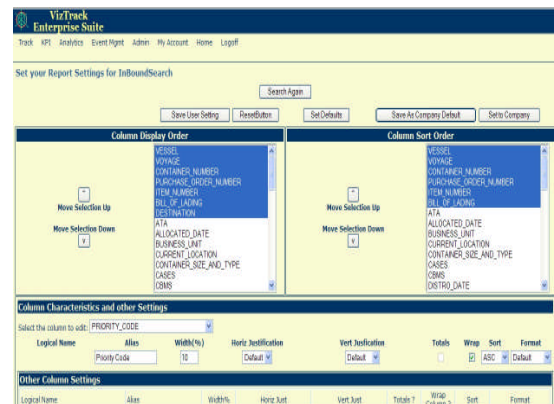
• Functional and Data Level Role-based Security

The framework includes role-based security and the corresponding API to control access to protected resources. The security is functional as well as data level.

• Security Database and Information Database could be separate.

Code contains the necessary intelligence to have the security framework and data reside on different databases.

- ASN and shipment management
- Track and trace
- Event monitoring and notification
- Configurable user management



Enterprise Suite of Supply Chain Performance Software

Driving Supply Chain Innovation



Source and Branding Options

Benefits:

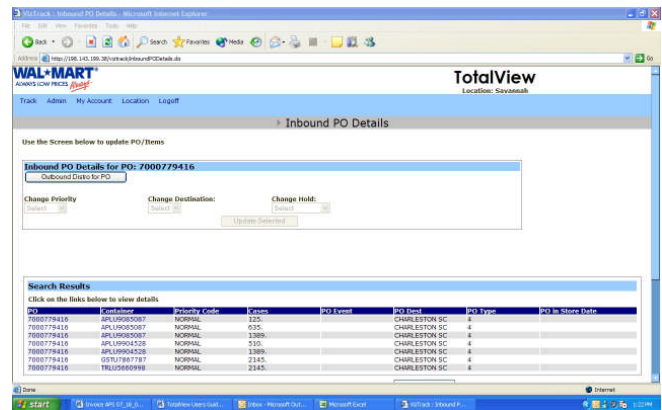
- View real-time, 24 x 7 visibility of order & shipment status
- Gain self-help capabilities for customers & suppliers
- Enable proactive responses to potential customer service issues
- View real-time location of goods if using RTLS or GPS system
- Receive alerts based on user-defined business rules
- Create one point of secured and personalized access to all logistic information
- Put mission critical information at the user's fingertips, allowing them to make better informed decisions
- Web-enable your legacy information
- Exchange information with all partners via EDI or Internet
- Leverage E-Business technology for competitive advantage

Branding Options

As a provider of logistics and supply chain services, your customers look to you to provide both a high degree of operational service and advanced technology.

As supply chain providers become more sophisticated and technically savvy, visibility, integration, and proactive management are quickly becoming necessary to compete.

With the Branding option you can tailor the Solution to compliment your company's service offerings and brand the entire solution as your own. With our ability to provide a configurable look and feel and custom web image services, we can provide your company with the technology to lead your competition and differentiate yourself in the marketplace.



Source Options

For companies with larger and well staffed Information Technology departments, we offer the option to purchase and maintain a portion of all of the source code allowing you to utilize the resources by your own JAVA development staff to build further upon AGI's capabilities. We can customize an offering that best suits your needs for maintainability, supportability, and cost effectiveness.

AGI Worldwide
3625 Brookside Parkway
Suite 525
Alpharetta, GA 30022
(678) 319-9443
www.agiworldwide.com

Enterprise Suite of Supply Chain Performance Software

Driving Supply Chain Innovation



Benefits:

- View real-time, 24 x 7 visibility of order & shipment status
- Gain self-help capabilities for customers & suppliers
- Enable proactive responses to potential customer service issues
- View real-time location of goods if using RTLS or GPS system
- Receive alerts based on user-defined business rules
- Create one point of secured and personalized access to all logistic information
- Put mission critical information at the user's fingertips, allowing them to make better informed decisions
- Web-enable your legacy information
- Exchange information with all partners via EDI or Internet
- Leverage E-Business technology for competitive advantage

AGI Worldwide
3625 Brookside Parkway
Suite 525
Alpharetta, GA 30022
(678) 319-9443
www.agiworldwide.com

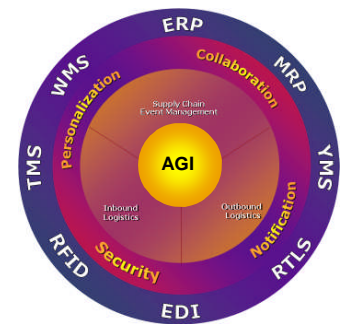


The 3PL Visibility Message

Outsourcing logistics functions to a Third-party Logistics provider (3PL) offers numerous competitive advantages. Customers cite greater flexibility, operational efficiency, improved customer service levels, and a better focus on their core businesses as part of the advantages of engaging the services of a 3PL. Increased competition, rising costs, and higher customer expectations are additional motivating factors for seeking strategic alliances with a 3PL.

AGI has a strong history of successfully delivering logistics strategy, consulting, and technology solutions that enable a more competitive and flexible supply chain for our clients.

AGI's suite provides supply chain integration, visibility, and performance management applications that enable a single, secured, personalized, and synchronized visibility and control of inbound and outbound logistics information. AGI can help your organization unlock the value of existing investments in supply chain, warehouse and transportation systems. With access to accurate and timely information about activities throughout your supply chain, you can make decisions and respond to issues faster and with more confidence.



AGI helps you gain visibility to the line-item level, enabling better decision-making relating to specific products in-transit. Key personnel handling inventory and transportation can make decisions based on the latest information and business rules. You can have instant visibility of pick-up and delivery progress via the web. You can also foresee order delays and failures before they happen and take corrective action to ensure logistics efficiency.

AGI transforms large quantities of data into actionable information by targeting "what you need to see, when you need to see it." It allows you to build rules-based intelligence around your supply chain data. It provides a framework that allows you to monitor, measure, query, and report on order and shipment information at the line-item level across the supply chain. Examples of visibility include:

- Order inquiry with drilldown by customer, item, PO, and order date with full drill-down capability
- Inventory inquiry to aggregate inventory from multiple warehouses into a single view
- Purchase Order visibility to view PO status from issue to delivery
- Dock scheduling to maintain inbound and outbound dock schedules for multiple warehouses
- Track user-defined Key Performance Indicators (KPIs)

- *View both inbound and outbound shipments in real-time*
- *Enhance Customer satisfaction*
- *Gain a competitive advantage*